

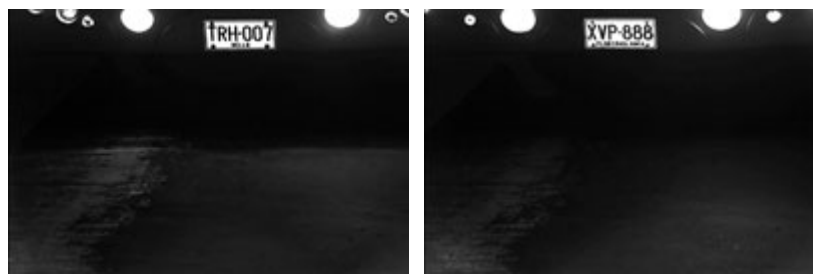
## GV-LPR CAM 20A ANPR Camera



CE FC

### INTRODUCTION

The GV-LPR CAM 20A is a 570 TVL resolution B/W analog camera designed for recognition of license plates on vehicles traveling at 200 km/h (124 mph) or less. With 24 high-efficient LEDs for an illumination range of 15 ~ 25 m (49.21 ~ 82.02 ft), the camera is able to automatically adjust its shutter speed to the scene and produce high-contrast video to the GV-LPR software that identifies license plates. It features a weather-proof (IP66) sun-shield housing for outdoor use, and is also able to work in environments with temperatures from as low as -30 °C (-22 °F) up to 50 °C (122 °F)



### KEY FEATURES

- 1/3" B/W Exview CCD
- Recognition for reflective License Plate only
- Maximum Speed 200 km/h (124 mph)
- Ingress protection (IP66)
- Built-in 24 powerful IR LED illuminators
- Built-in always-on fan
- Sun-shield

## Specifications

GV-LPR CAM 20A 1/3" B/W License Plate Recognition Camera			
Models		GV-LPR CAM 20A EIA DC 12V	GV-LPR CAM 20A CCIR DC 12V
<b>Camera</b>			
Sensor		1/3" B/W Exview CCD	
Resolution		570 TVL	
Video Standard		NTSC	PAL
Min. Illumination	Color	N/A	N/A
	B/W	N/A	N/A
	IR ON	0 Lux	0 Lux
Shutter Speed		Automatic, Fixed (1/60 ~ 1/100000; Default 1/500)	
White Balance		AWB	
Max. Speed		200 km/h (124 mph)	
Image Setting		Brightness, Contrast, Saturation, Sharpness, Gamma, White Balance, Flicker-less, Image Orientation, Shutter Speed	
<b>IR LAMP</b>			
LED Quantity		24 high-efficient LEDs	
IR Distance		15 ~ 25 m (49.21 ~ 82.02 ft)	
Optimal IR Distance		18 m (59.06 ft)	
Illumination View Angle		30°	
Illuminator Life		25,000 hrs	
<b>Lens</b>			
Focal Length		10 ~ 120 mm	
Max. Aperture		1.6	
Mount		CS Mount	
Image Format		1/3"	
Operation	Focus	manual	
	Zoom	manual	
	Iris	DC	
<b>Mechanical</b>			
Lens Mounting		N/A	
Connectors	Power	DC Jack	
	Auto Iris	DC drive	
	TV-Out	BNC	
<b>General</b>			
Temperature		Operation: -30 °C ~ 50 °C (-22 °F ~ 122 °F) Storage: -30 °C ~ 70 °C (-22 °F ~ 158 °F)	
Heater		≤ 5 °C (ON), > 5 °C (OFF) ; 20W	
Power Source		12V DC	
Max. Power Consumption		30W (normal), 50W (heater on)	
Dimensions (L x W x H)		425.01 x 155 x 156.75 mm (16.73 x 6.10 x 6.17 in) with sun shield	
Weight		5 kg (11.02 lb) with sun shield	
Construction		Robust aluminum with weatherproof sun shield	
Regulatory		CE, FCC, C-Tick, RoHS compliant	
Protection classification		IP66	
<b>Software License (using with supplied GV-LPR Capture Dongle)</b>			
Free License		Yes	
Maximum License		GV-ASManager 4.0: 1 channel GV-ASManager 4.1: 8 channels	
Increment for Each License		N/A	
Dongle Type		External	

### Note

1. GV-LPR CAM 10A comes with a free GV-LPR Software, and the supplied GV-LPR Capture Dongle will need to be inserted to run the software (LPR Plugin). Since the free GV-LPR Software is a Trial Edition, it can only capture the license plate images and does not support the license plate recognition function.
2. All specifications are subject to change with notice.